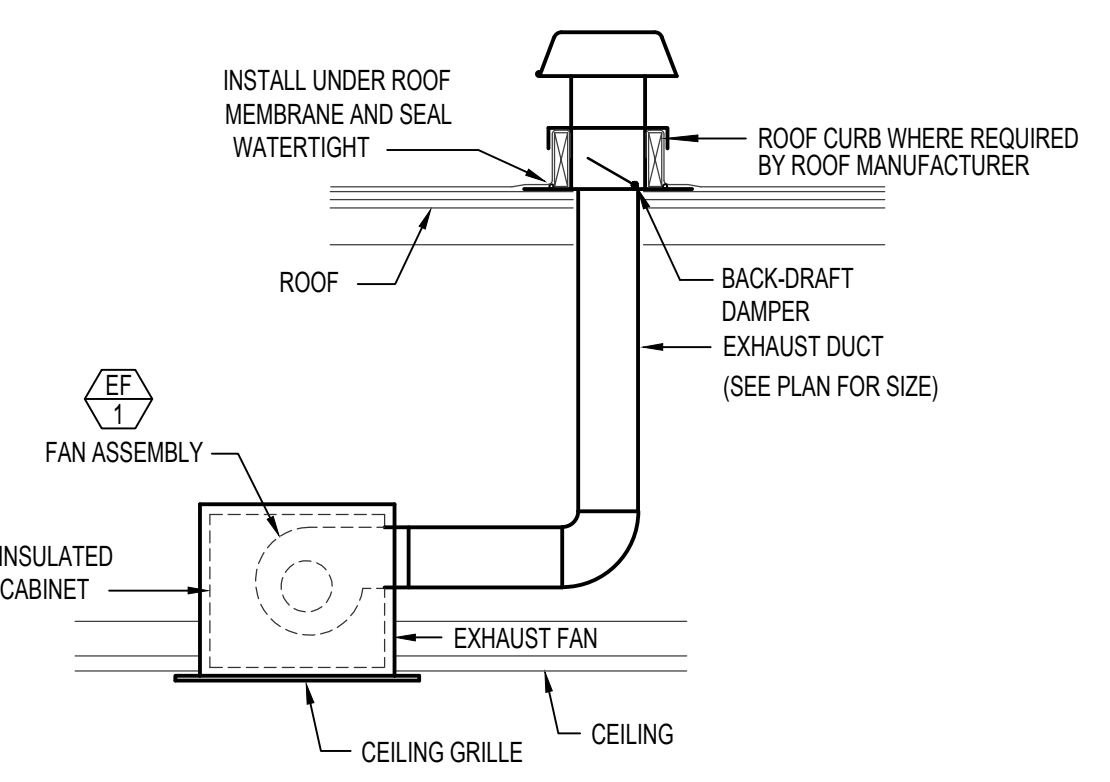
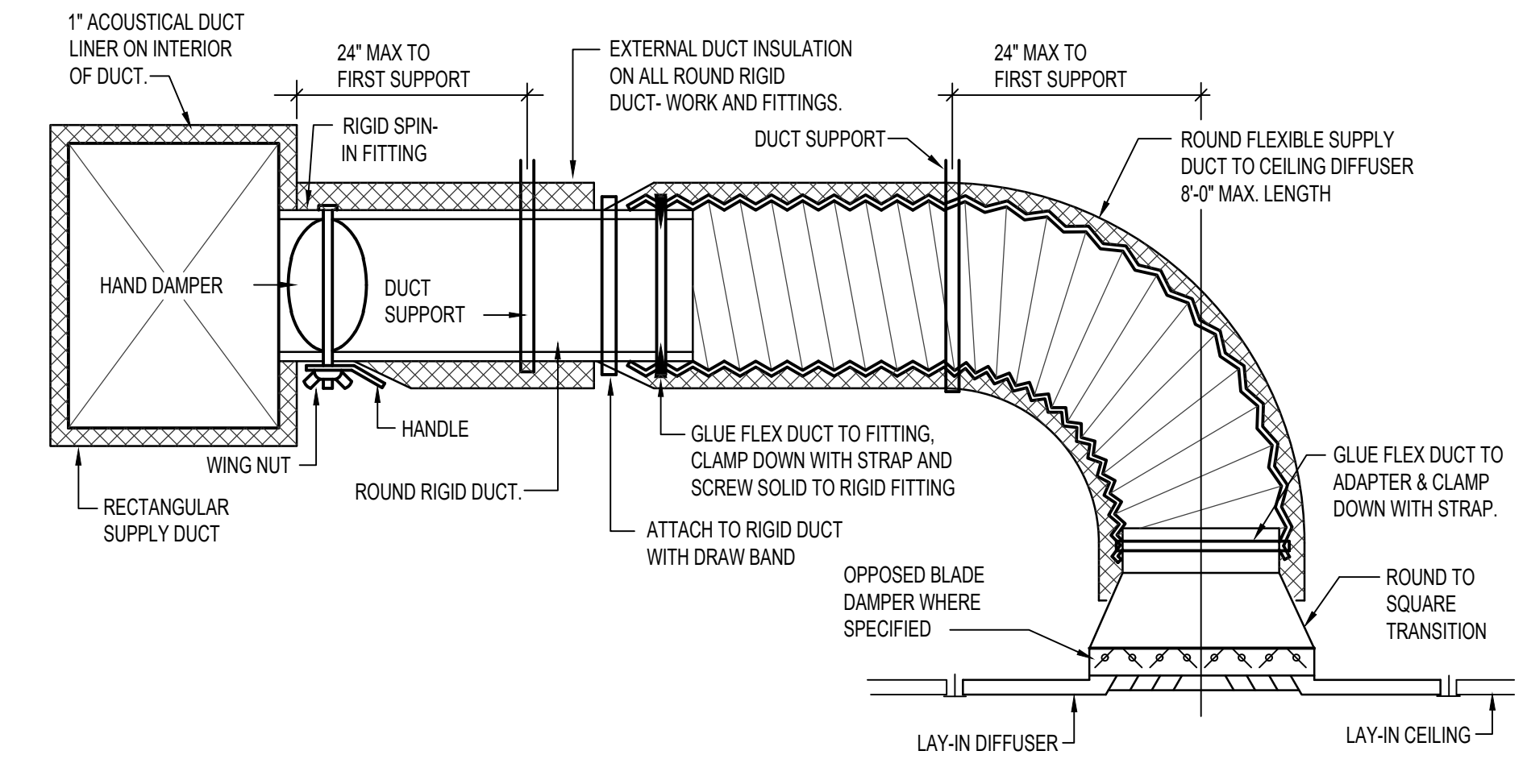


NOTE: POSITION ROOF CURB OVER ROOF JOISTS IN SUCH A MANNER AS TO SPREAD THE WEIGHT OF THE MECHANICAL UNIT OVER AS MANY TRUSSES AS POSSIBLE REGARDLESS OF HOW TRUSSES ARE RUNNING

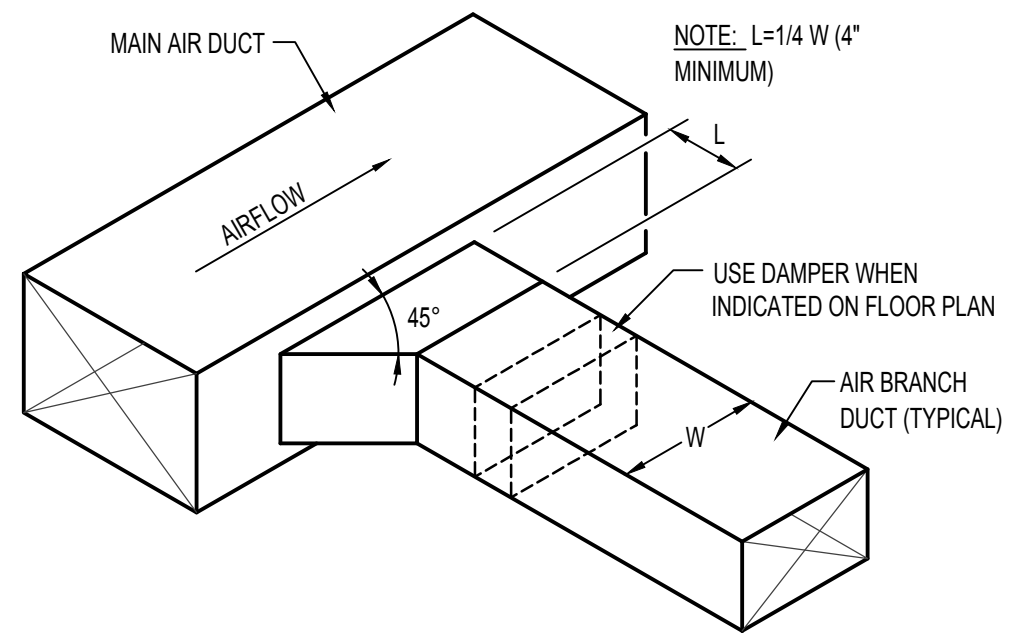
**TYPICAL ROOFTOP MOUNTING DETAIL**  
NO SCALE



**CEILING MOUNTED EXHAUST FAN DETAIL**  
NO SCALE



**CEILING DIFFUSER DETAIL WITH FLEXIBLE DUCT**  
NO SCALE



NOTE: L=1/4 W (4\"/>

**RECTANGULAR DUCT CONNECTION DETAIL**  
NO SCALE

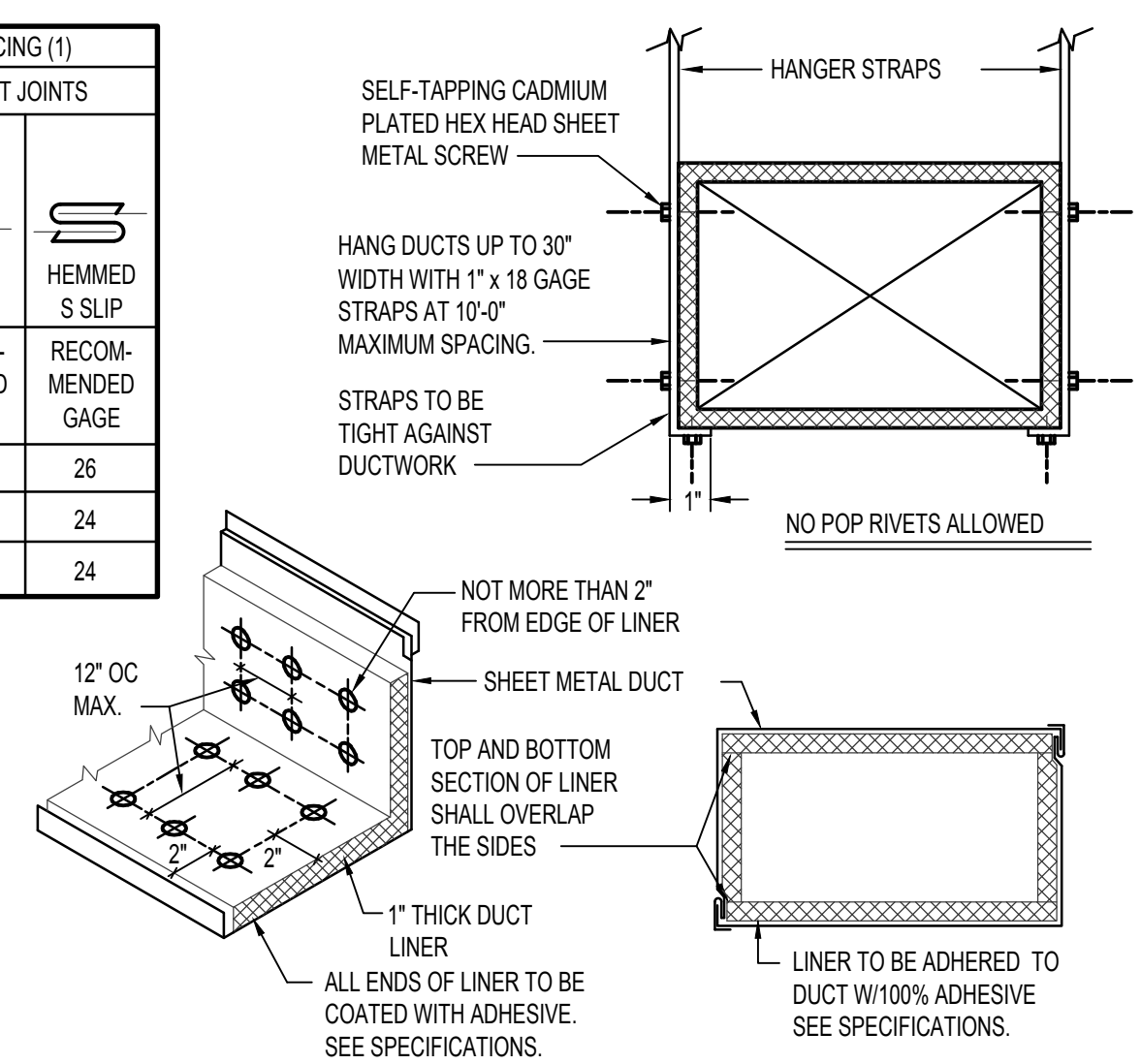
DIMENSION OF LONGEST SIDE, INCHES	SHEET METAL GAGE (ALL FOUR SIDES)	TRANSVERSE REINFORCING (1)		
		MINIMUM REINFORCING ANGLE SIZE AND MAXIMUM LONGITUDINAL SPACING BETWEEN TRANSVERSE JOINTS &/OR INTERMEDIATE REINFORCING	AT JOINTS	
			DRIVE SLIP	HEMMED S SLIP
UP THRU 12	26	NONE REQUIRED	26	26
13 - 18	24	NONE REQUIRED	24	24
19 - 30	24	1"x1"x1/8" @ 60 IN	-	24

(1) TRANSVERSE REINFORCING SIZE IS DETERMINED BY DIMENSION OF SIDE TO WHICH ANGLE IS APPLIED.

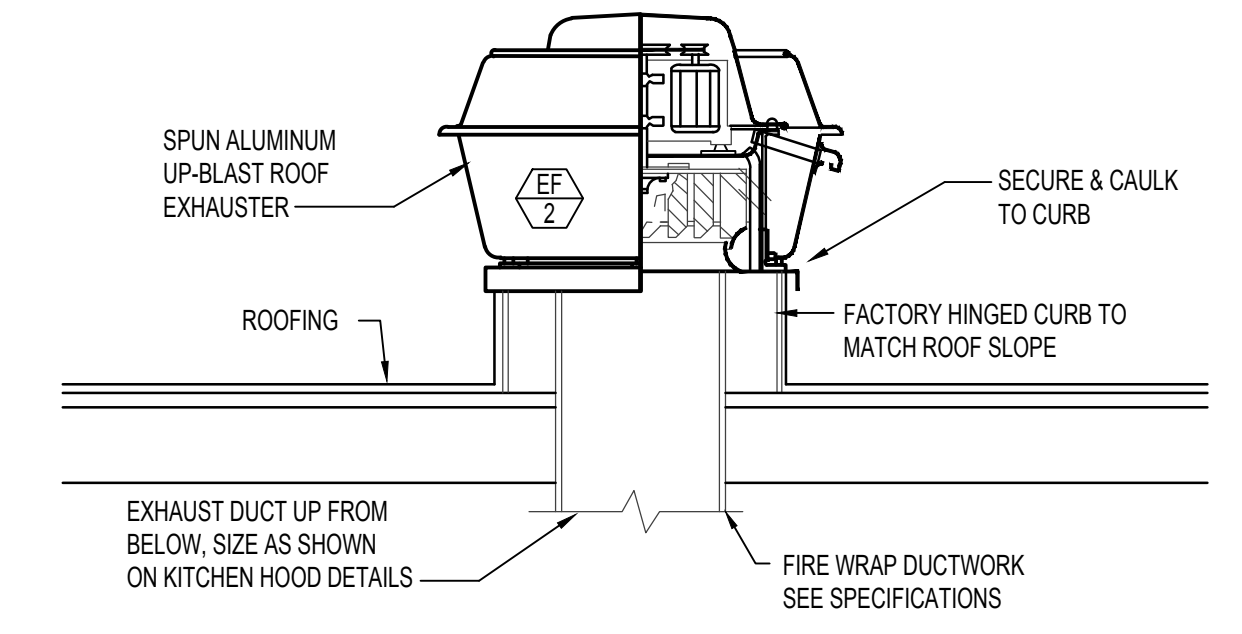
METAL FASTENERS - O-MARK INSULPINS, DURO DYNE FASTENERS OR GRIPNAILS.

GRIP NAILS SHALL BE INSTALLED BY GRIPNAIL AIR HAMMER OR BY AUTOMATIC FASTENER EQUIP.

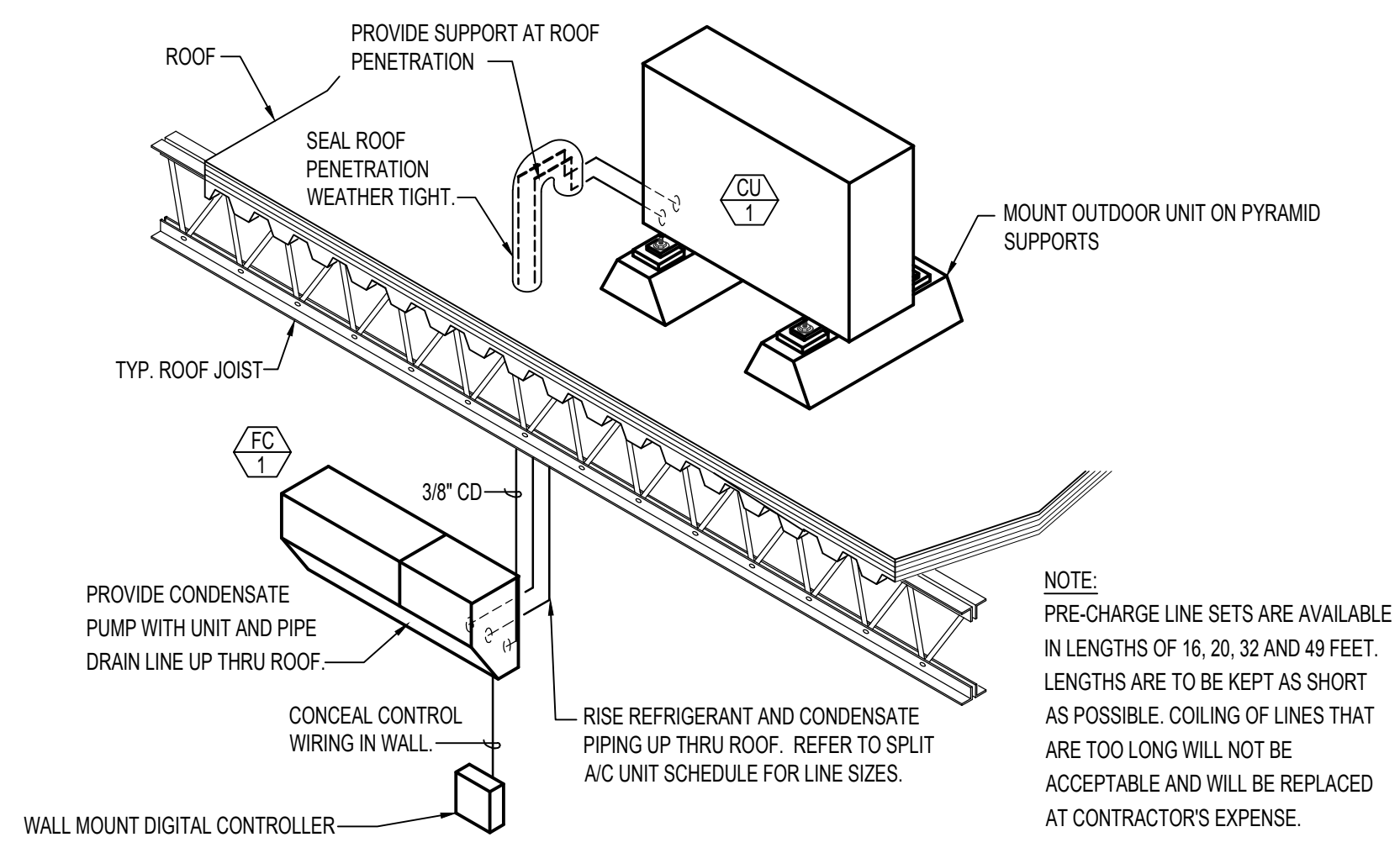
ENDS OF LINER SHALL BE BUTTED FIRMLY TOGETHER



**DUCT CONSTRUCTION AND HANGER DETAIL**  
NO SCALE

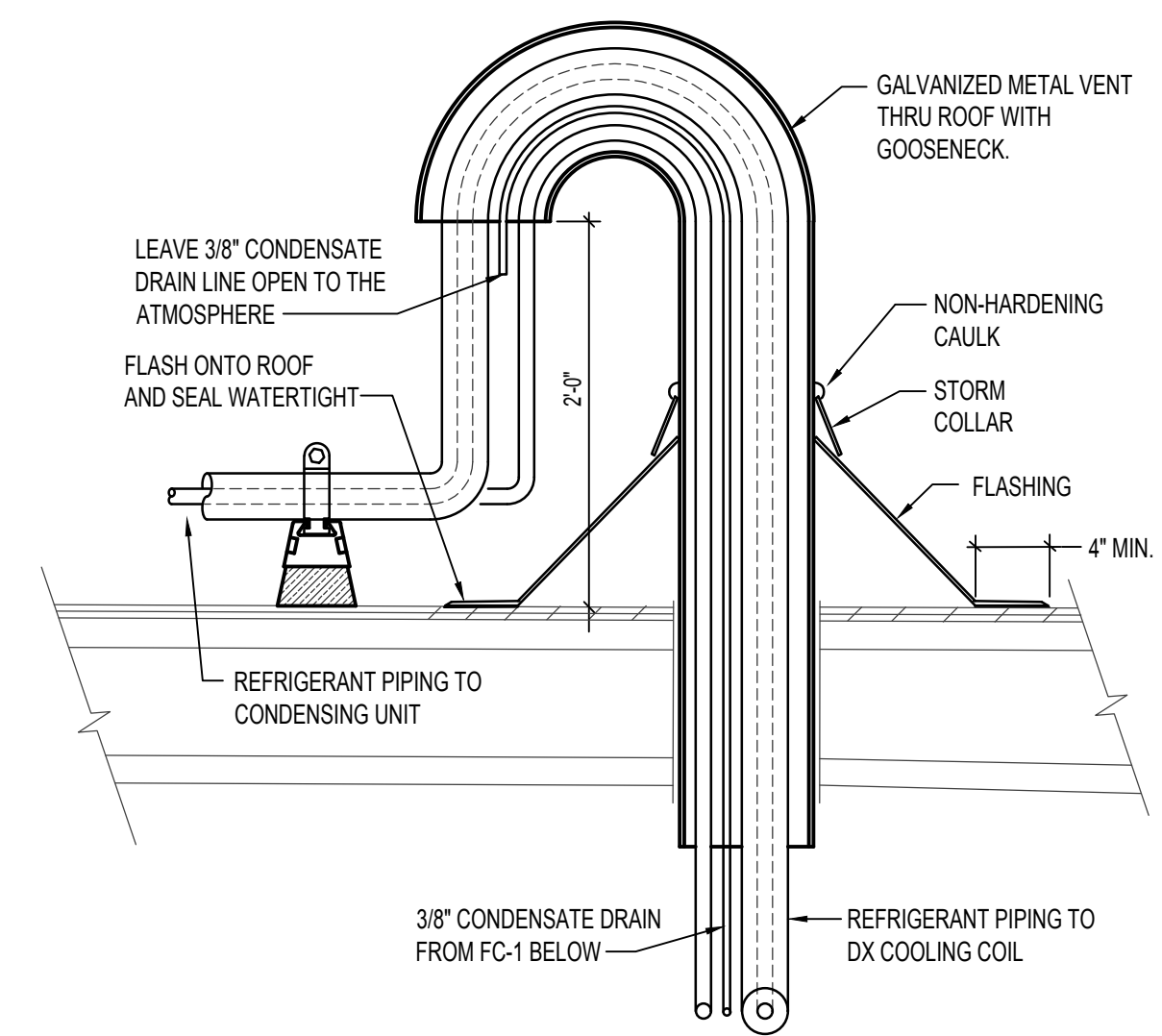


**ROOF TOP EXHAUST FAN DETAIL**  
NO SCALE



NOTE: PRE-CHARGE LINE SETS ARE AVAILABLE IN LENGTHS OF 16, 20, 32 AND 49 FEET. LENGTHS ARE TO BE KEPT AS SHORT AS POSSIBLE. COILING OF LINES THAT ARE TOO LONG WILL NOT BE ACCEPTABLE AND WILL BE REPLACED AT CONTRACTOR'S EXPENSE.

**FAN COIL & REFRIGERANT PIPING DETAIL**  
NO SCALE



**PIPING THRU ROOF DETAIL**  
NO SCALE

NO.	REVISIONS	DATE

The document or any part thereof in detail or design concept is the personal property of Keller Associates, Inc. and shall not be copied, reproduced, or transmitted in any form without the written authorization of Keller Associates, Inc.

SBT HRDC ROOF COLLAPSE  
 FORT HALL, IDAHO  
 MECHANICAL DETAILS

	<b>Engineered Systems Associates</b> 1355 EAST CENTER POCATELLO, IDAHO 83201 PHONE: (208) 233-0501 FAX: (208) 233-0529 EMAIL: esa@engsystems.com ESA JOB NUMBER: 19033	DRAWN: _____ CHECK: _____ VERIFY SCALE: Scales based on 22"x34" prints. PROJECT NO. 219064-000 SHEET NO. M201
	1-1/2 Inches	PAGE